



Company presentation

A LEADING EPC CONTRACTOR...

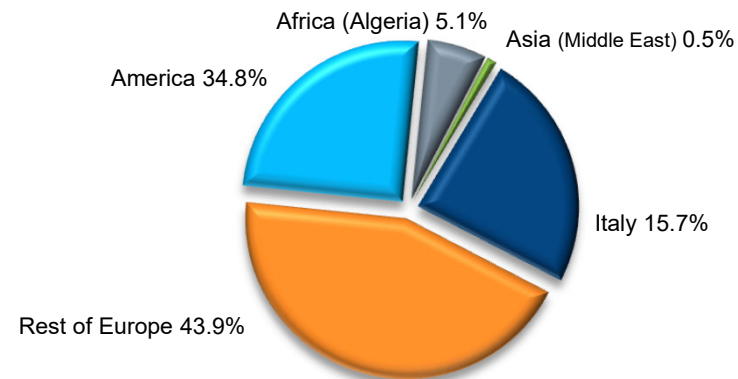
HIGHLIGHTS

- **Leading global player** in transport infrastructure, operating in **high-growth end-markets** (e.g. roads and motorways, railways and undergrounds, ports and airports)
- **Specialized EPC contractor** providing fully “integrated offer”
- **Strong track record** on successful large and complex projects execution
- **World class technical and engineering** skills to create innovative solutions
- **53rd International Contractor worldwide(*)**

* 2016 ENR Global Contractor List referring to 2015 consolidated figures

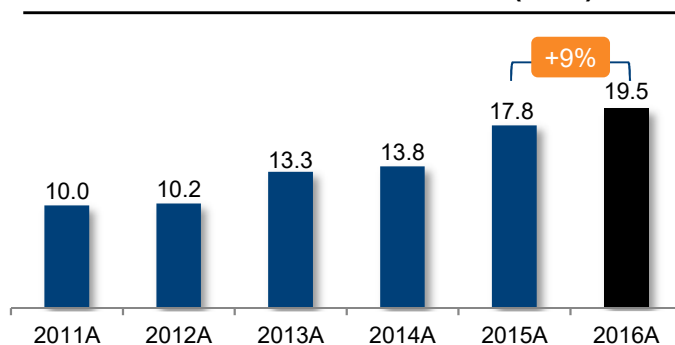
FY 2016 FIGURES BREAKDOWN

2016 FY REVENUE AT OVER €3 BN

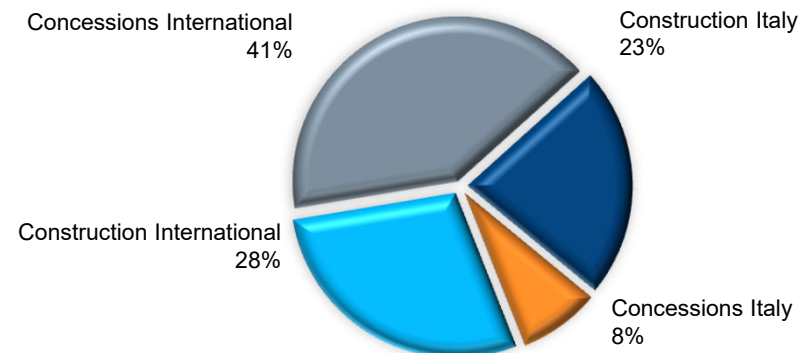


KEY FIGURES EVOLUTION

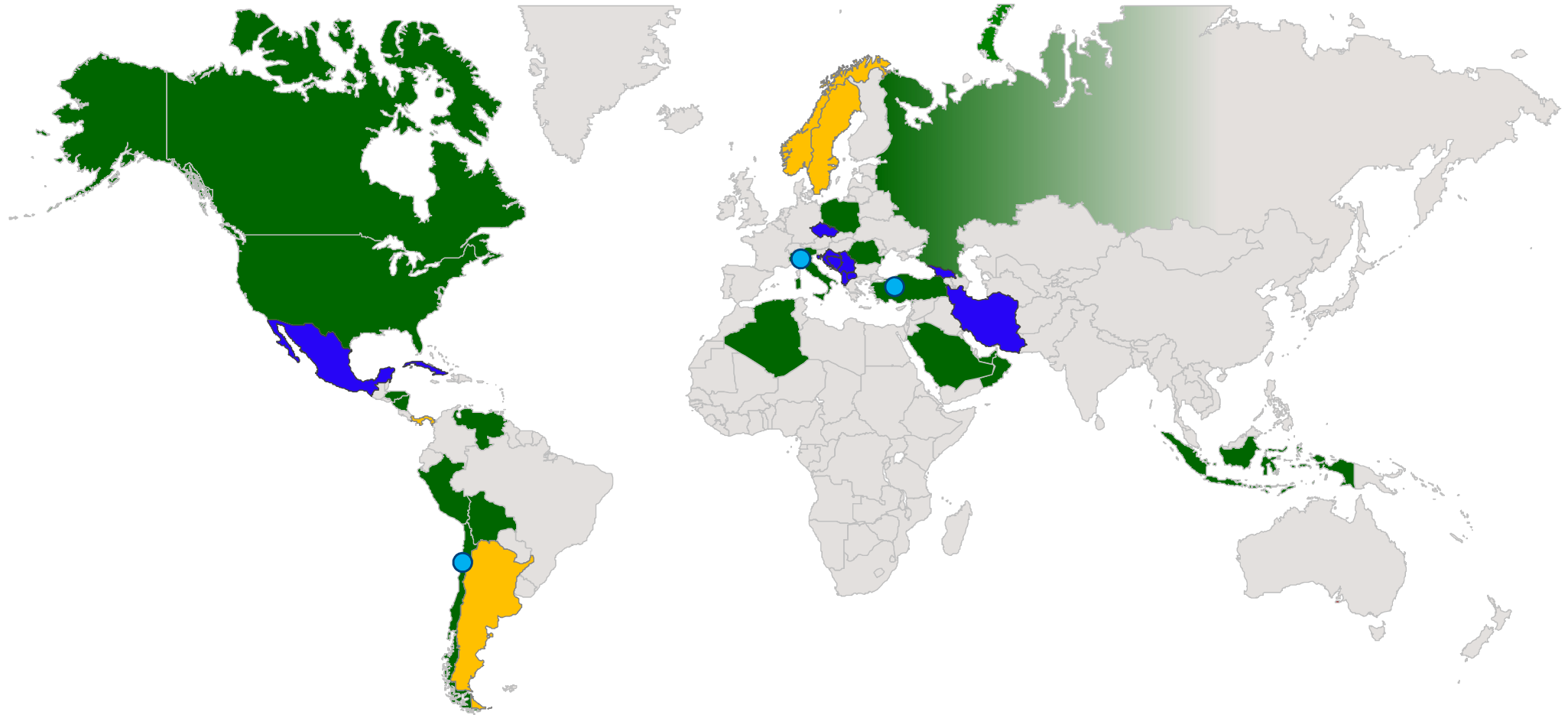
BACKLOG IN EXECUTION (€BN)



2016 FY BACKLOG IN EXECUTION AT OVER €19BN



WITH GEOGRAPHICAL PRESENCE AND...



CONSTRUCTION PROJECTS

Algeria	Honduras	Oman	Russia
Bolivia	Indonesia	Peru	Saudi Arabia
Canada	Italy	Poland	Turkey
Chile	Nicaragua	Romania	U.A.E.
			U.S.A.
			Venezuela

NEW MARKETS

Argentina
Panama
Scandinavia
Singapore

SCOUTING MARKETS

Balkans	Georgia
Cuba	Iran
Czech Republic	Mexico

CONCESSION PROJECTS

Chile
Italy
Turkey

... WITH A BROADLY DIVERSIFIED BUSINESS MODEL

2016 KEY CONSOLIDATED FIGURES:

- REVENUES: MORE THAN € 3 BILLION (+5.2% YOY)
- TOTAL BACKLOG⁽¹⁾: MORE THAN €27 BILLION
- APPROX. 100 PROJECTS IN OVER 20 COUNTRIES
- OVER 11,500 EMPLOYEES



CONSTRUCTION

CONCESSION

TRANSPORT INFRASTRUCTURE



WATER & ENERGY



CIVIL & INDUSTRIAL BUILDING



PLANT DESIGN & ENGINEERING



CONCESSION PARTICIPATIONS



O&M



WORLDWIDE RANKINGS⁽²⁾

BRIDGE: 3RD CONTRACTOR
MASS TRANSIT & RAIL: 14TH CONTRACTOR
MOTORWAY: 19TH CONTRACTOR
SUBWAY: 21ST CONTRACTOR

WORLDWIDE RANKINGS⁽²⁾

HYDRO PLANTS: 5TH CONTRACTOR

WORLDWIDE RANKINGS⁽²⁾

HEALTHCARE: 19TH CONTRACTOR

TRANSPORT INFRASTRUCTURES
 ENERGY
 HEALTHCARE

MAJOR ONGOING PROJECTS:

I-405 MOTORWAY (US)
 GEBZE-ORHANGAZI-IZMIR MOTORWAY (TURKEY)
 BRENNER RAILWAY TUNNEL (ITALY)
 NAPLES-BARI HS/HC RAILWAY (ITALY)

MAJOR ONGOING PROJECTS:

MUSKRAT FALLS HYDRO PLANT (CANADA),
 UPPER CISOKAN PUMPED STORAGE POWER PLANT (INDONESIA)

MAJOR ONGOING PROJECTS:

ETLIK INTEGRATED HEALTH CAMPUS IN ANKARA (TURKEY)
 E-ELT (CHILE)
 WEST METROPOLITAN HOSPITAL IN SANTIAGO (CHILE)

MAJOR ONGOING PROJECTS:

NEW HOSPITALS IN ITALY
 NEW RAILWAY PROJECTS IN ITALY

MAJOR PROJECTS IN OPERATION:

ARTURO MERINO BENÍTEZ INTERNATIONAL AIRPORT IN SANTIAGO (CHILE)
 THIRD BRIDGE ON BOSPHORUS (TURKEY)
 GEBZE-ORHANGAZI-IZMIR MOTORWAY (TURKEY)

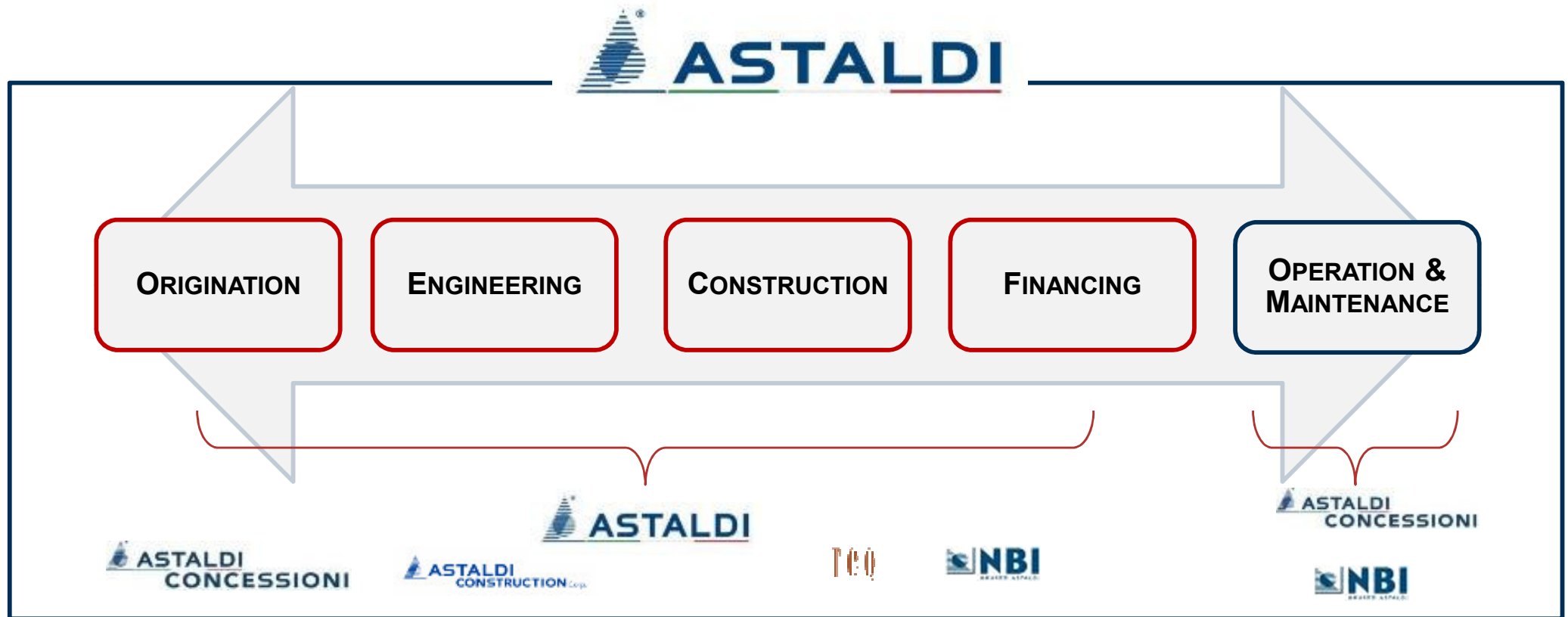
MAJOR ONGOING PROJECTS:

TUSCANY HOSPITALS (ITALY)
 WEST METROPOLITAN HOSPITAL IN SANTIAGO (CHILE)
 ETLIK INTEGRATED HEALTH CAMPUS IN ANKARA (TURKEY)
 NEW HOSPITAL IN VENICE-MESTRE (ITALY)
 RELAVES MINING PROJECT (CHILE)

Notes: (1) Total backlog includes €19.5 billion of backlog in execution and €7.9 billion of orders in pipeline; (2) 2016 ENR Sourcebooks – rankings on FY 2015 consolidated revenues.

SPECIALIZED EPC CONTRACTOR PROVIDING FULLY “INTEGRATED OFFER”

Astaldi addresses the market by developing complex and integrated initiatives (design, construction, operation), with solid expertise and highly specialised human resources.



STRONG TRACK RECORD OF SUCCESSFUL COMPLEX PROJECT EXECUTION

TRACK RECORD

- 4,565 KM** OF RAILWAYS
- 185 KM** OF UNDERGROUNDS
- 15,000 KM** OF ROADS & MOTORWAYS
- 200 KM** OF TUNNELS
- 160 KM** OF BRIDGES AND VIADUCTS

- 6,000 MW** OF INSTALLED CAPACITY
- 33** HYDROELECTRIC POWER PLANTS
- 68** DAMS
- 80** AQUEDUCTS

- 25.700.000 M³** OF CIVIL BUILDINGS
- 20** HOSPITALS
- 8,900** BEDS
- 19** AIRPORTS
- 17,200** PARKING SPACES



RECENTLY COMPLETED PROJECTS



- Western High-Speed Diameter in Saint Petersburg – Russia
- €2.2bn investment
 - 12km section, with 5.3km viaducts on sea and 2 cable-stayed bridges
 - Completed in December 2016



- 3rd Bridge on Bosphorus (Northern Marmara Highway Project) – Turkey
- \$3bn+ investment for the entire project
 - 1st longest and widest hybrid bridge at worldwide level
 - Opened to the public on August 26th, 2016



- Izmit Bay Bridge (Gebze-Orhangazi-Izmir Motorway Project) – Turkey
- \$7bn investment for the entire project
 - 4th longest suspension bridge worldwide
 - Completed in April 2016



- Warsaw Subway Line 2 (Lot 1) – Poland
- €800m investment
 - New subway line of 6 km in length and 7 stations
 - Completed in March 2015



- Pulkovo International Airport in Saint Petersburg – Russia
- €710m investment
 - The most important airport in the Baltic Region with a transport capacity of 14,000,000 passengers/ year
 - Completed in 2015

CONCESSIONS SECTOR

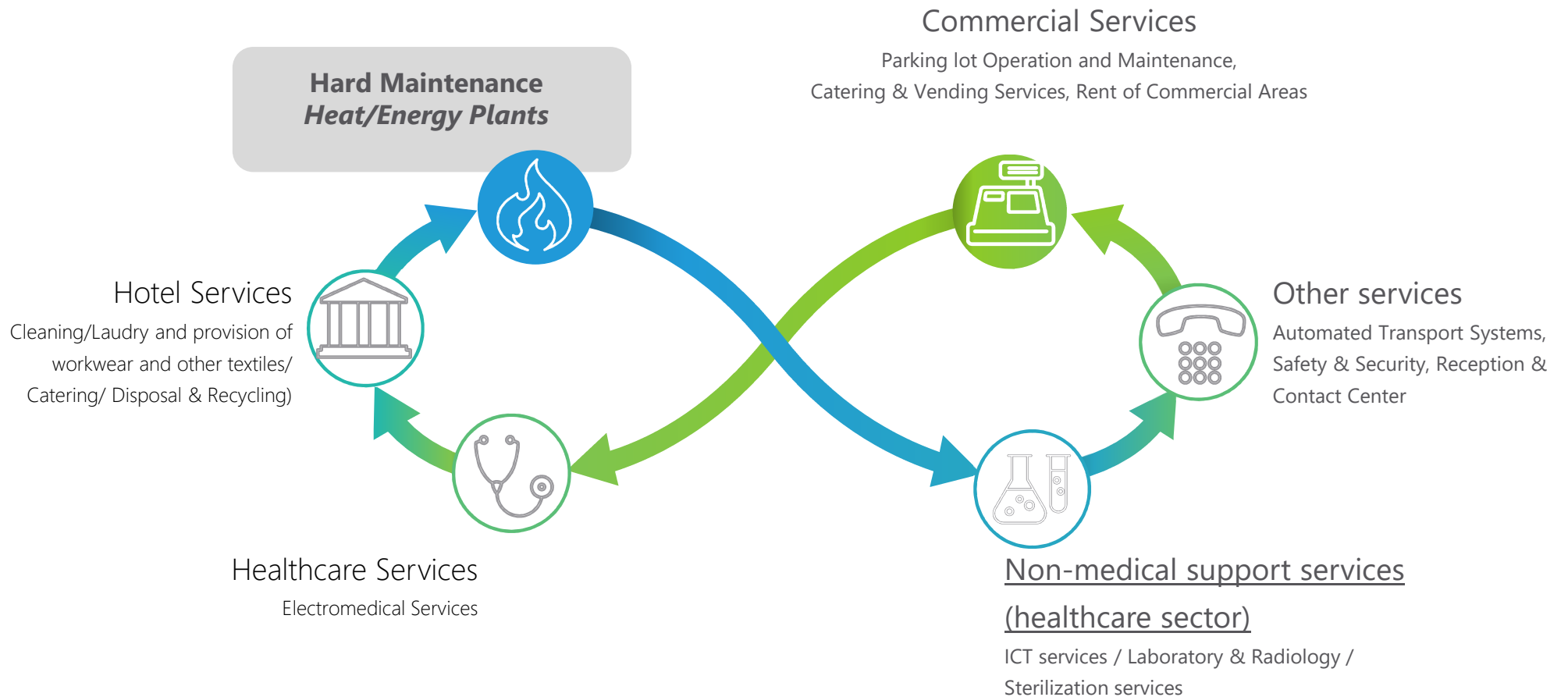
Starting from Italy, where in 2008 it successfully completed the first Hospital in PPP, Astaldi has carefully selected further PF/PPP opportunities in the healthcare, transport, energy and mining sectors in specific countries (Italy, Chile, Turkey).

Astaldi strengthened its role in the greenfield concession segment by leveraging on its experience in the construction sector. Astaldi Concessioni (100% owned by Astaldi) was created in 2010.

Through its **Dual Integrated Construction-Concession Model** – that integrates the traditional construction activities with concessions – Group supports business growth and profitability and enhance cash-flow stability.

CONCESSION INVESTMENTS		
SEGMENT : TRANSPORT	SEGMENT: ENERGY AND MINING	SEGMENT: HEALTHCARE
COUNTRY: ITALY, TURKEY, CHILE	COUNTRY: CHILE	COUNTRY: ITALY, TURKEY, CHILE
<p>MOTORWAYS</p> <ul style="list-style-type: none"> ● TOTAL OF 720 KM OF MOTORWAYS <p>UNDERGROUNDS</p> <ul style="list-style-type: none"> ● TOTAL OF 40 <p>OF WHICH, IN OPERATION:</p> <ul style="list-style-type: none"> ● 13 KM ● 19 STATIONS <p>AIRPORTS</p> <ul style="list-style-type: none"> ● 1, WITH A MAX. CAPACITY OF 30 MILLION PAX/YEAR 	<p>ENERGY – <i>IN OPERATION</i></p> <ul style="list-style-type: none"> ● 1 HYDROELECTRIC PLANT ● 557 GWH/YEAR OF GENERATED CAPACITY ● 111 MW OF INSTALLED POWER <p>MINING – <i>IN OPERATION</i></p> <ul style="list-style-type: none"> ● 1 MINING PLANT ● 3,200 TONS/YEAR OF COPPER 	<p>HEALTHCARE</p> <ul style="list-style-type: none"> ● 6,700+ HOSPITAL BEDS ● 17,200+ PARKING SPACES <p>OF WHICH, IN OPERATION:</p> <ul style="list-style-type: none"> ● 2,700+ HOSPITAL BEDS ● 5,600+ PARKING SPACES

O&M ACTIVITIES



SYSTEMS, RENEWABLE ENERGY, FACILITY MANAGEMENT AND MAINTENANCE

NBI Impianti ed Energia and Sartori Tecnologie Industriali are the Group's Companies specialized in these sectors



- **ENGINEERING SYSTEMS**
- **FACILITY MANAGEMENT**
- **RENEWABLE ENERGY**

Turn-key plants of any size and type, cutting-edge solutions for complex systems, clean energy, micro-cogeneration, engineering and innovative control systems for air quality in confined spaces (healthcare centers, airports, fair centers)



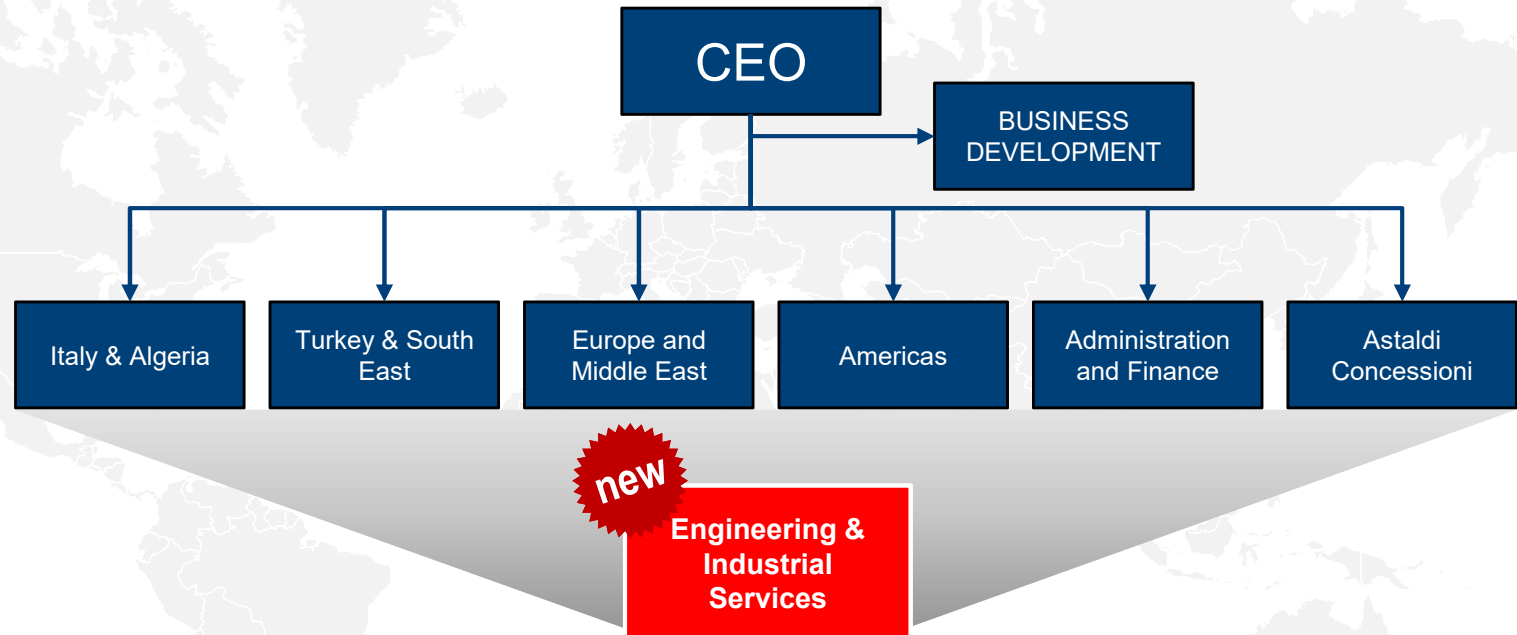
- **INDUSTRIAL MAINTENANCE**
- **METALWORK PRODUCTION FOR CIVIL INFRASTRUCTURES AND CONSTRUCTION**

Specialized in the assembly of machines and equipment and in machinery hoisting operations performed in critical situations or in particularly narrow settings



CONSOLIDATED ORGANIZATIONAL STRUCTURE

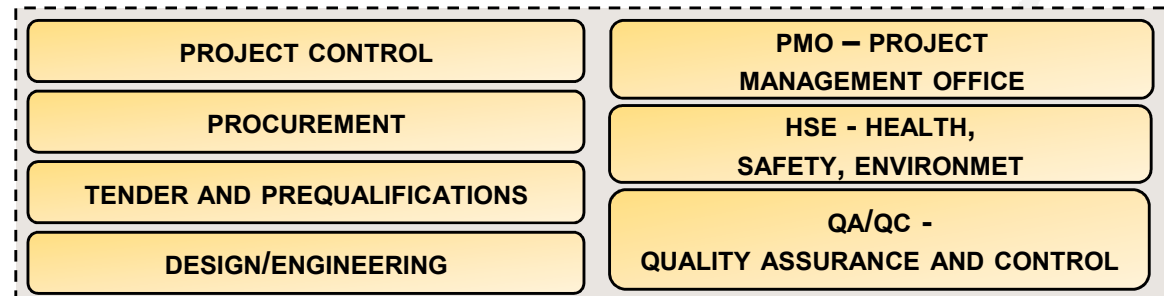
- Consolidated risk control and management processes
- A centralized "knowledge hub" to serve all new initiatives in all geographies, in order to achieve...
- ...consistent best practice approach from bidding to delivery at a Global level



Engineering & Industrial Services

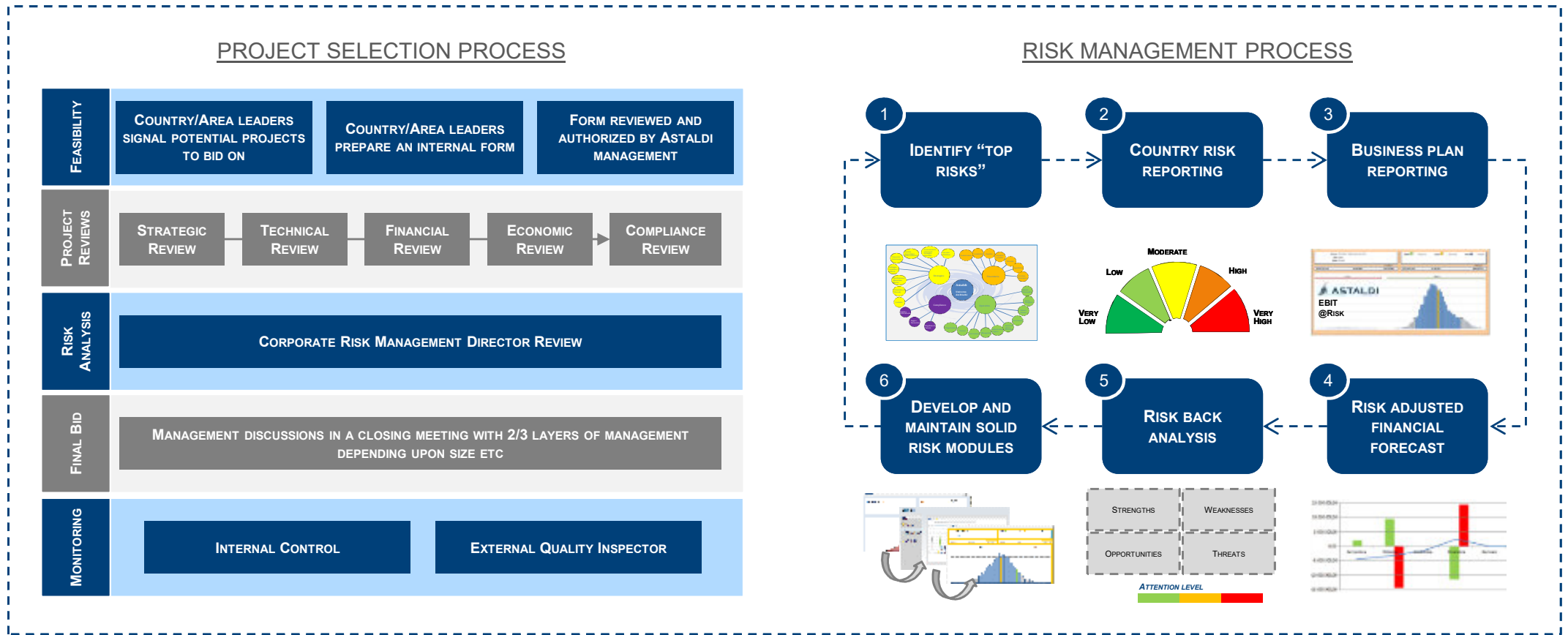
- Support and Monitoring throughout the entire business Process
- Efficient and timely response to all business needs through specialized staff
- Allows a smooth transition in all the Project Phases from Tender\Planning to Commissioning\Handing Over

**Staff
~ 100**



DISCIPLINED APPROACH TO PROJECT SELECTION AND RISK

- Project selection based on established multi-step and multi-review process.
- Risk management function supported by internally developed models and procedures..



DISCIPLINED APPROACH TO QUALITY, SAFETY AND ENVIRONMENT

- ASTALDI has adopted an Integrated Management System – Quality, Safety, Environment – conforming to the international Standards: ISO 9001:2008 “*Quality Management Systems*”, ISO 14001:2004 “*Environmental Management Systems*”, BS OHSAS 18001:2007 “*Occupational Health and Safety Management Systems*” concerning the activities of Project Management, design and construction of major civil engineering works, transport infrastructures, hydraulic works, including dams and hydroelectric power plants, Project Financing and General Contracting too.
- The integrated system has been certified by «DNV GL».



ASTALDI'S EXPERTISE IN
OPERATION & MAINTENANCE

ASTALDI – O&M SECTOR

Healthcare projects

KEY MILESTONES

- ✓ 1,500,000 SQM OF AREAS
- ✓ 6,700 BEDS

Four Hospitals in Tuscany Italy



2,000 beds
280,000 sq.m of Areas

Venice-Mestre Hospital, Italy



680 beds
140,000 sq.m of areas

Etlik Healthcare Campus in Ankara, Turkey



1,000,000 sq.m of areas

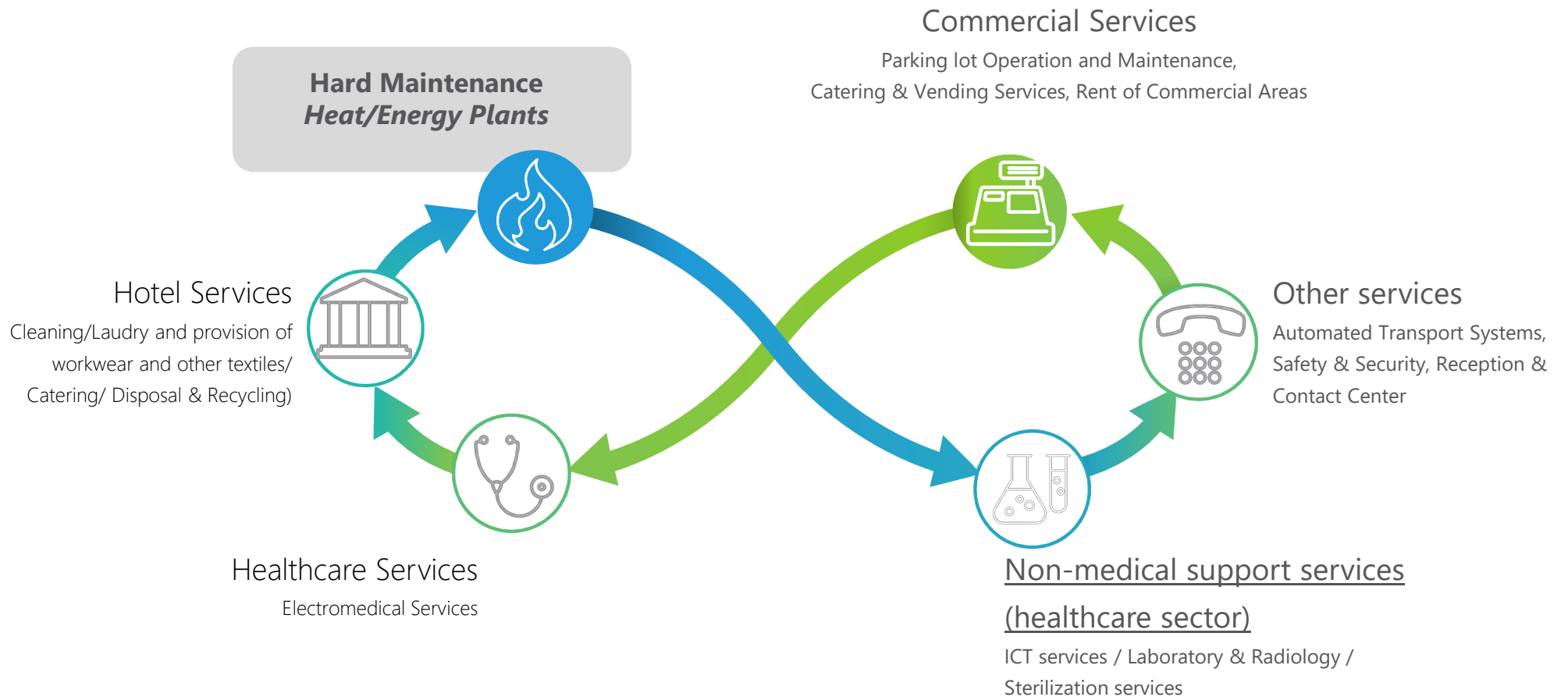
Western Metropolitan Hospital In Santiago, Chile



540 beds
130,000 sq.m of areas

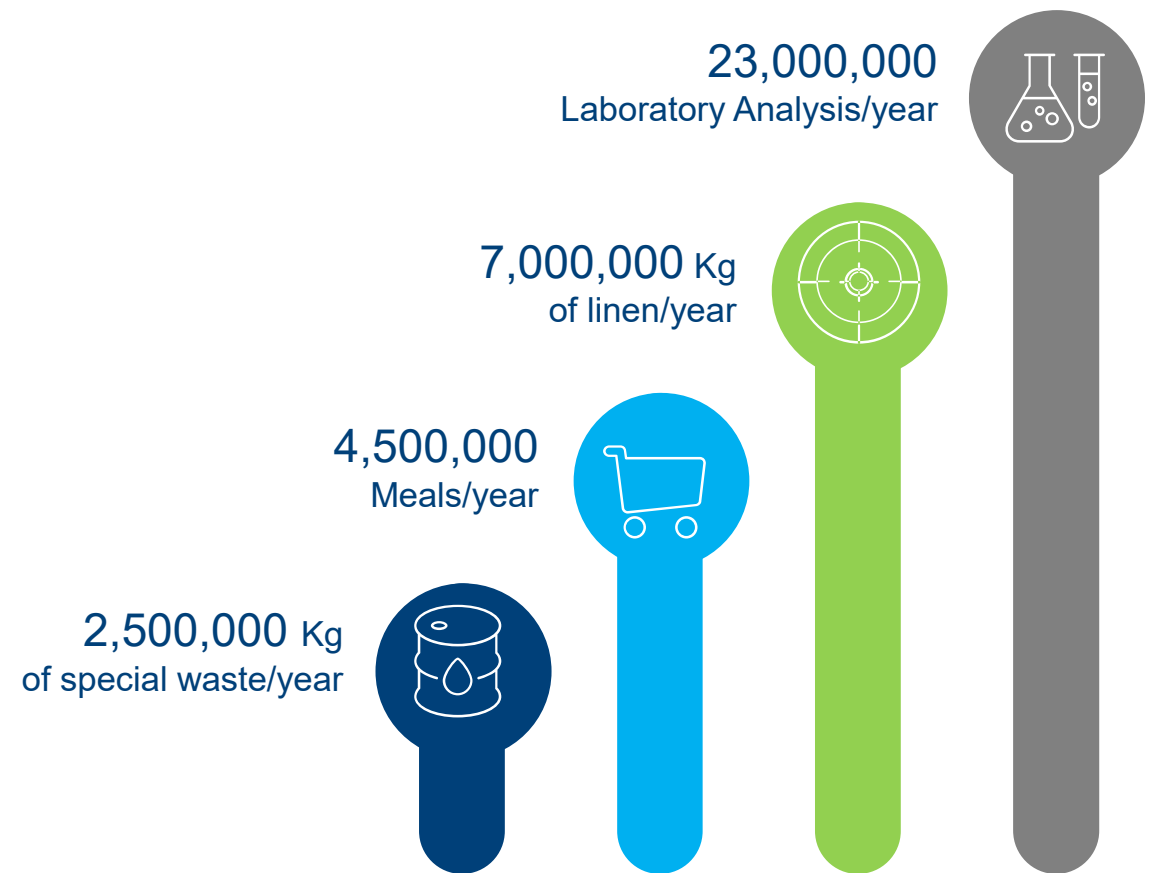


O&M ACTIVITIES

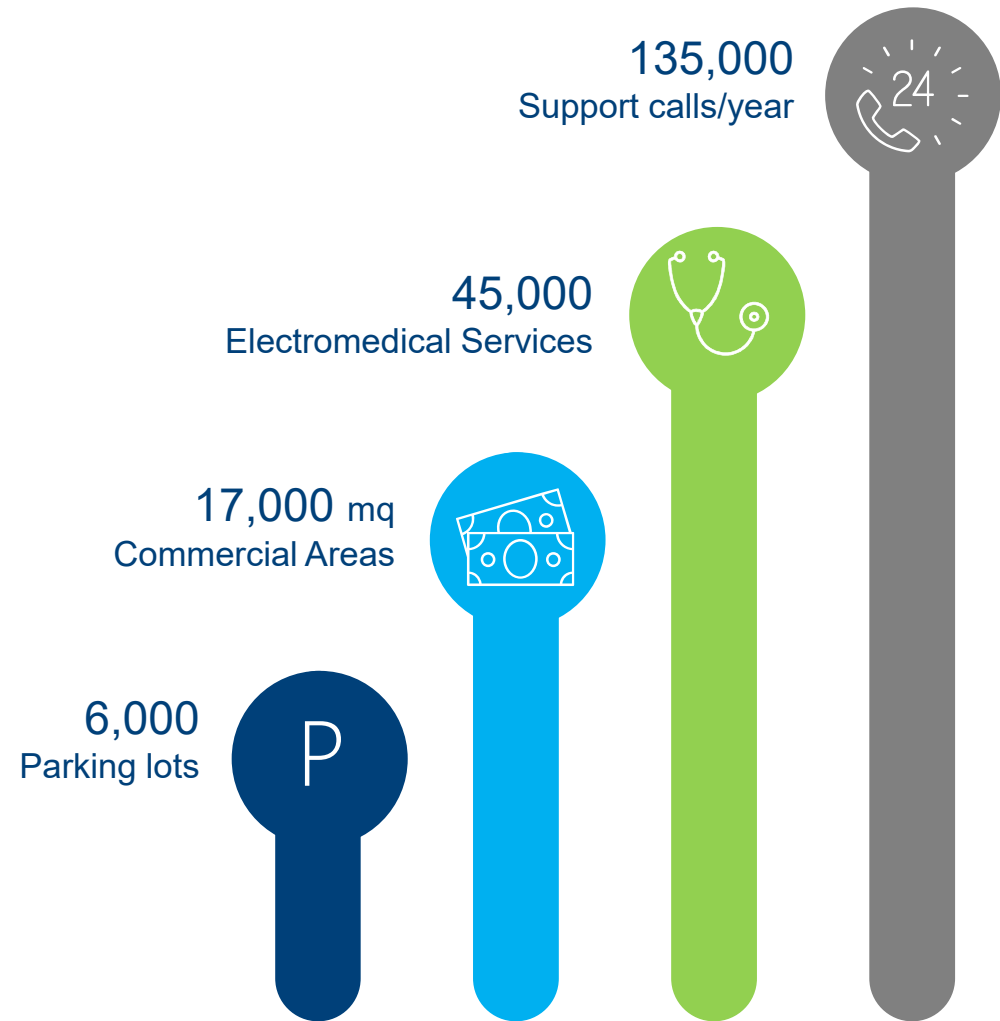


O&M “SOFT” ACTIVITIES

About 80% of provided activities is due to “soft” services or non-hard maintenance activities



O&M “SOFT” ACTIVITIES



CASE STUDY: WESTERN METROPOLITAN HOSPITAL (Chile)

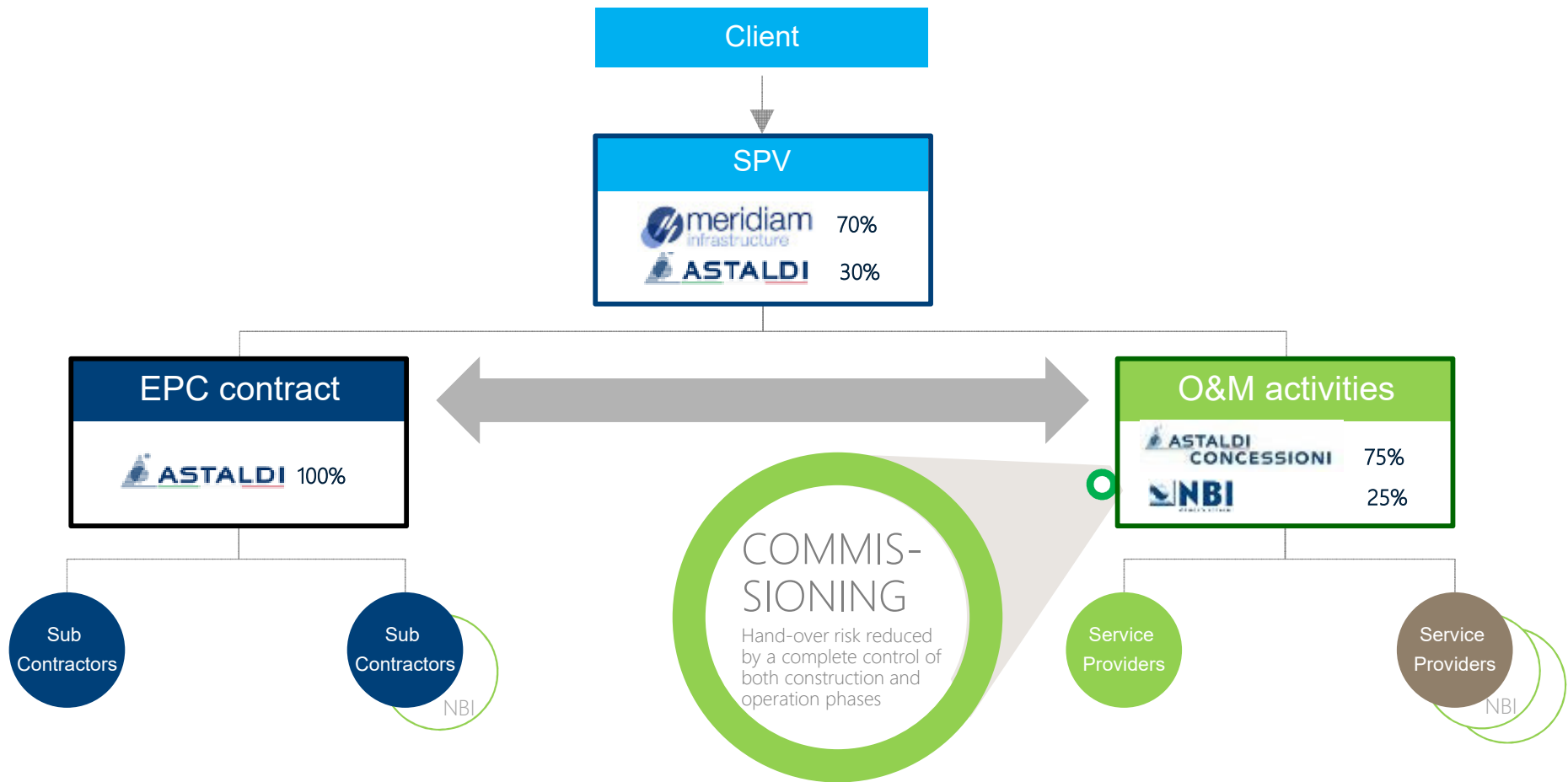


Image Gallery

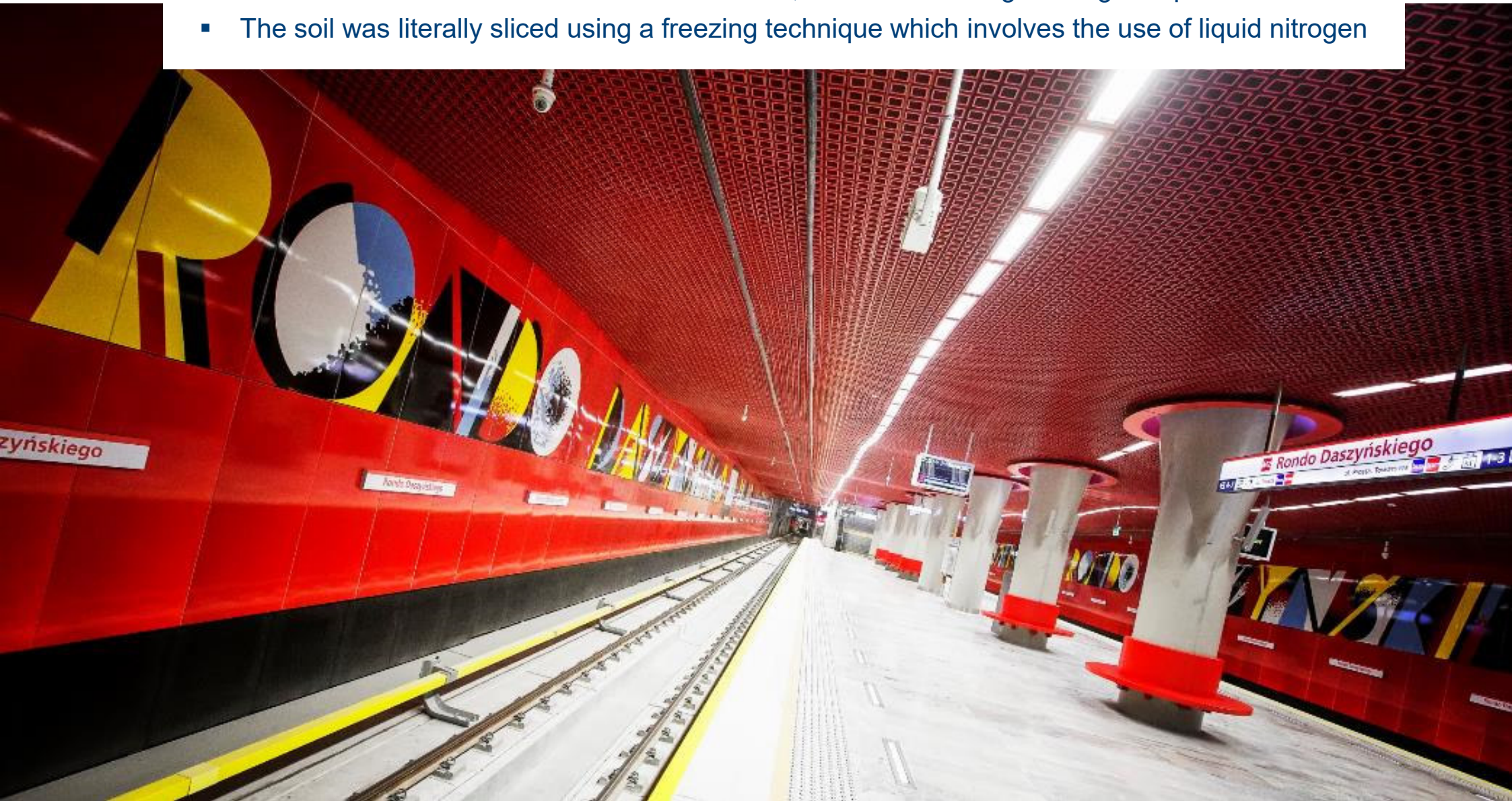
THIRD BRIDGE ON BOSPHORUS – Turkey

- The longest and widest hybrid bridge in the world
- The bridge with the tallest towers in the world
- Completed in only 3 years



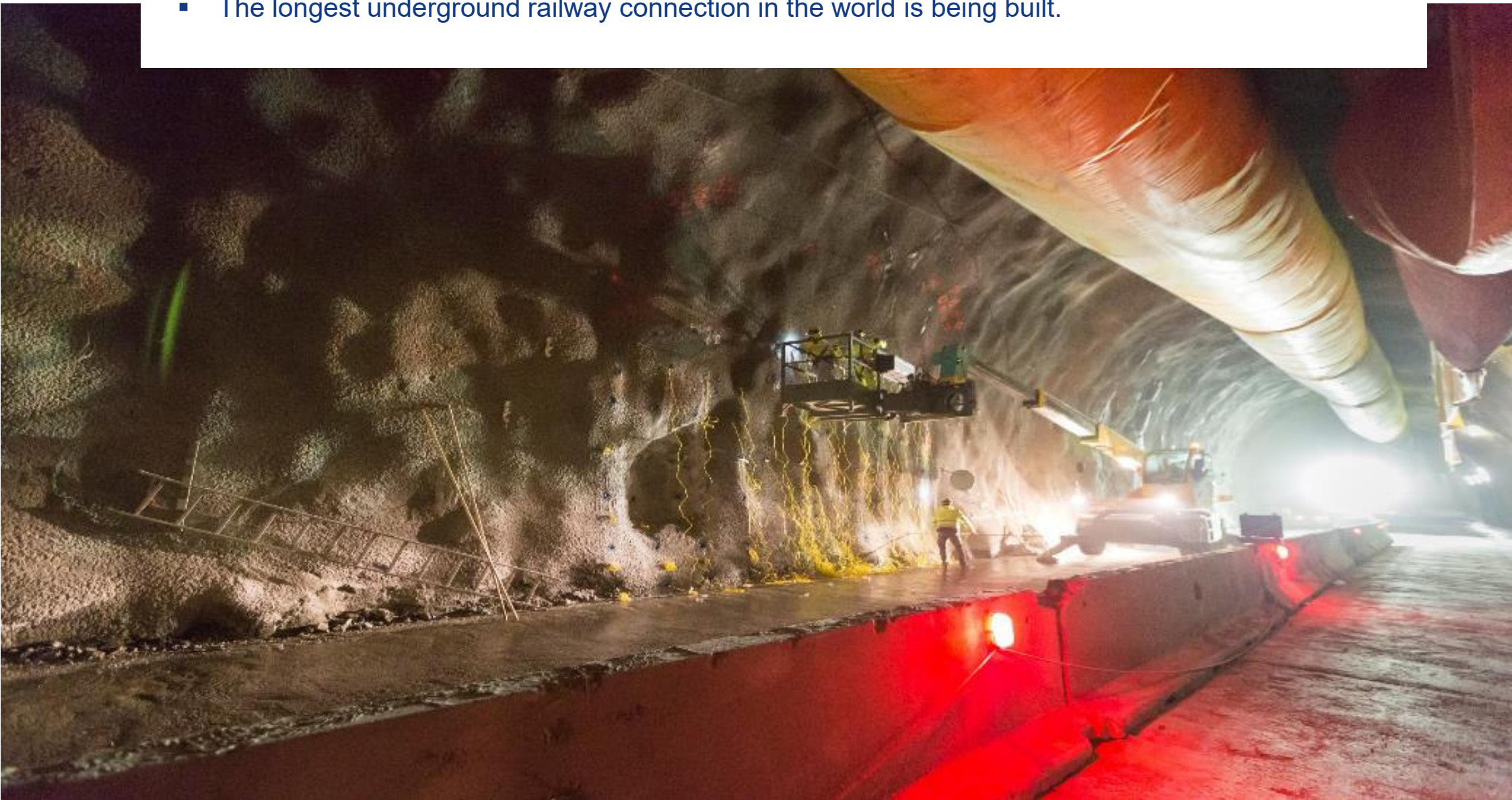
WARSAW SUBWAY LINE 2 – Poland

- The stations are relevant from an architectural, as well as an engineering viewpoint.
- The soil was literally sliced using a freezing technique which involves the use of liquid nitrogen



BRENNERO RAILWAY TUNNEL – Italy

- The longest underground railway connection in the world is being built.



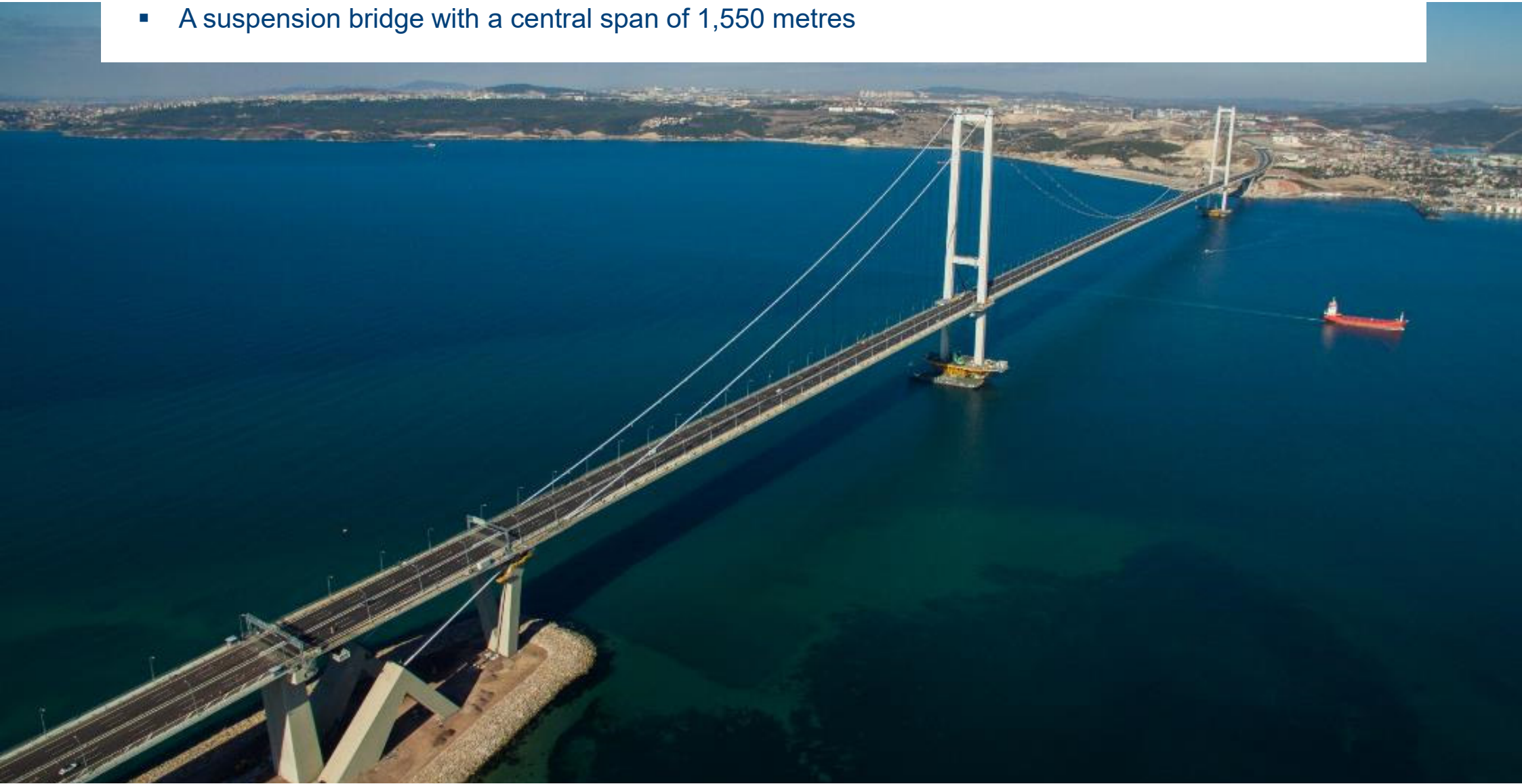
MILAN SUBWAY LINE 5 – Italy

- Fully automated system (driverless system), which places Line 5 at the forefront in Europe.
- The 1st project finance in Italy and one of the first in Europe, developed in the urban transport sector.
- “*European Transport (Light Rail) Deal of the Year*” international award won in 2007.



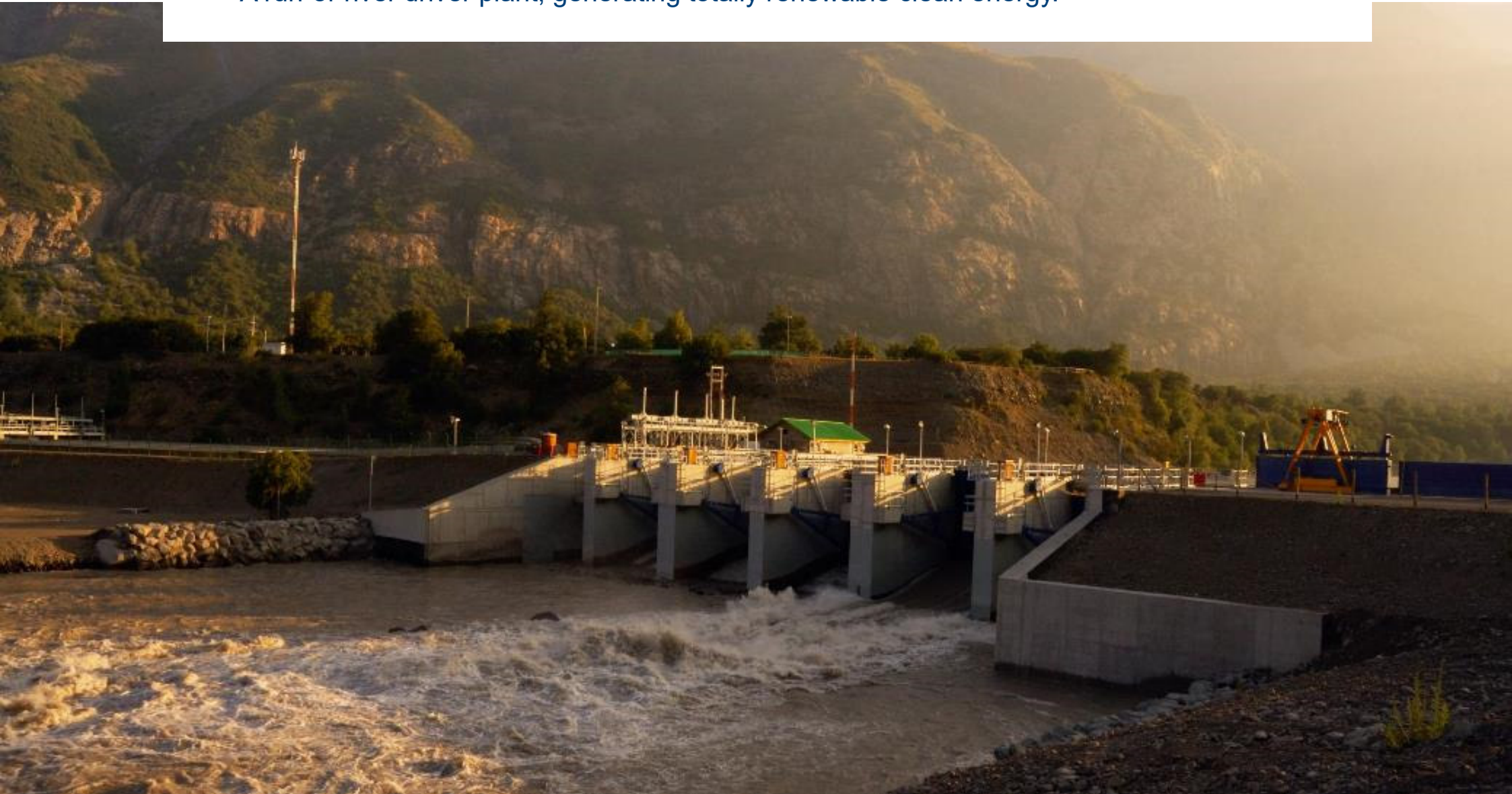
IZMIT BAY BRIDGE – Turkey

- The 4th longest suspension bridge in the world
- A suspension bridge with a central span of 1,550 metres



CHACAYES HYDROELECTRIC POWER PLANT – Chile

- A run-of-river driver plant, generating totally renewable clean energy.



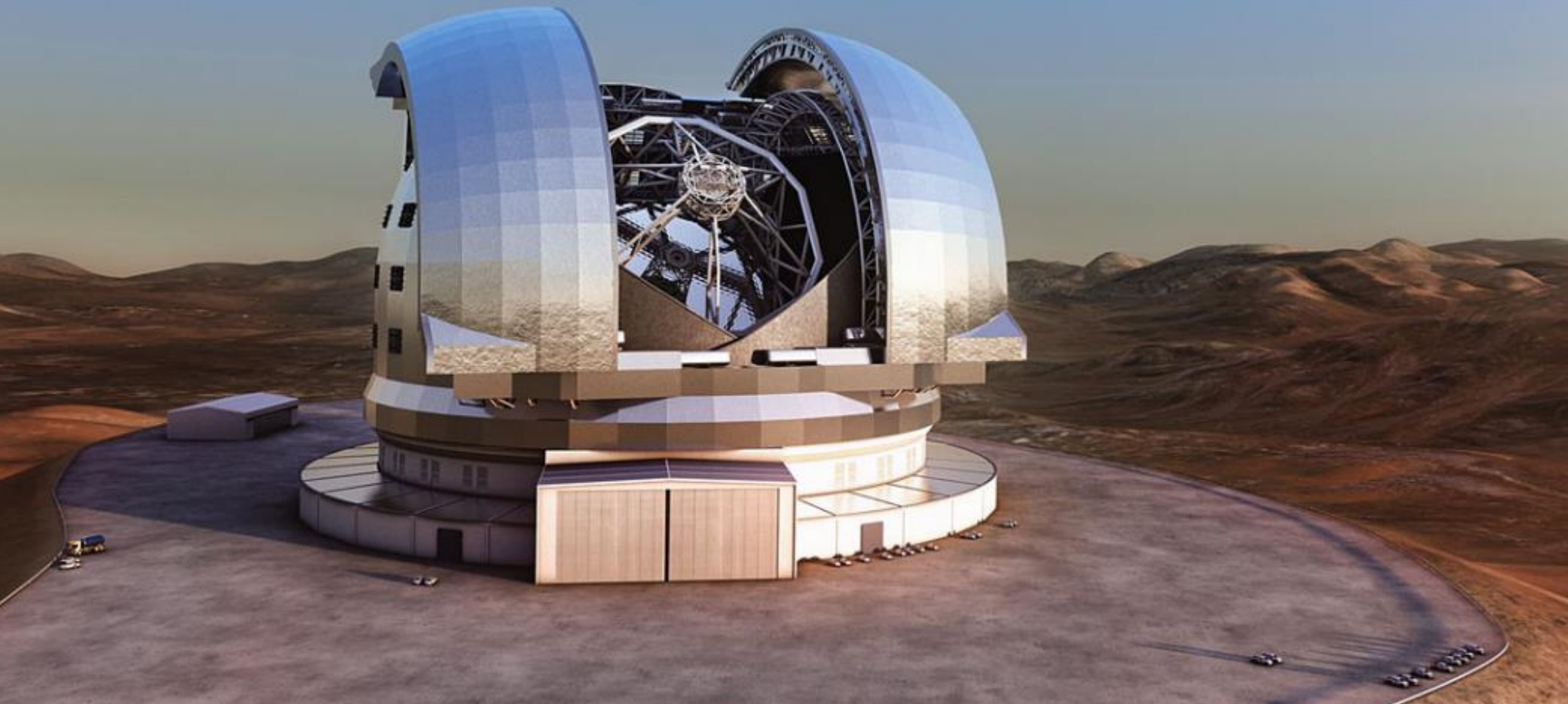
ETLIK INTEGRATED HEALTH CAMPUS IN ANKARA – Turkey

- Europe's largest health care complex.
- 3,600 hospital beds divided into 8 healthcare facilities.
- Construction area of about 1,100,000 square meters.



EUROPEAN EXTREMELY LARGE TELESCOPE (E-ELT) – Chile

- The largest optical telescope in the world (mirror Ø: 39.3 m)
- Focus capability 100,000,000 times better than the human eye
- It is being built on the Cerro Armazones, at an altitude of 3,000



ARTURO MERINO BENÍTEZ INTERNATIONAL AIRPORT – Chile

- The 6th largest airport in South America
- Potential expansion up to 45 million of passengers per year.



TRANSPORT INFRASTRUCTURES



Rome-Naples High-Speed Railway | Location: Italy



Gebze-Orhangazi-Izmir Motorway | Location: Turkey



Northern Marmara Motorway and 3rd Bosphorus Bridge | Location: Turkey



Anatolian Motorway | Location: Turkey



Warsaw Subway Line 2 | Location: Poland



Jonica National Road, Lot DG-21 | Location: Italy



Naples Subway Line 2 (Toledo Station) | Location: Italy

WATER AND ENERGY



Balambano Hydroelectric Project | Location: Indonesia



Chacayes Hydroelectric Power Plant | Location: Chile | *under management*



Huanza Hydroelectric Project | Location: Peru



Inga Hydroelectric Project – phase 1 and phase 2 | Location: DR Congo



Nacaome Valley RCC Dam | Location: Honduras



Pont Ventoux Hydroelectric Power Plant | Location: Italy



Cerro del Águila Hydroelectric Project | Location: Peru

CIVIL AND INDUSTRIAL BUILDINGS



Rho-Pero Expo Fair Centre in Milan | Location: Italy



Lia Manoliu National Stadium in Bucharest | Location: Romania



Pulkovo International Airport | Location: Russia, Saint Peterburg



New Hospital in Venice-Mestre | Location: Italy | *under management*



Four Hospitals In Tuscany | Location: Italy | *under management*

PLANT ENGINEERING AND FACILITY MANAGEMENT



New Hospital In Naples | Location: Italy



Milas-Bodrum International Airport | Location: Turkey



COOP Adriatica Photovoltaic plant | Location: Italy



Milan Subway Line 5 | Location: Italy



Poste Italiane Data Center in Turin | Location: Italy



Buddusò –Alà dei Sardi wind farm | Location: Italy

CONCESSION SECTOR



Chacayes Hydroelectric Power Plant | Location: Chile | *under management*



Milan Subway Line 5 | Location: Italy | *under management*



New Hospital in Pistoia (*Ospedale San Jacopo*) | Location: Italy | *under management*



New Hospital in Venice-Mestre | Location: Italy | *under management*

AWARD-WINNING PROJECTS

TRANSPORT INFRASTRUCTURES



NAPLES SUBWAY LINE 1, TOLEDO STATION | ITALY
ITA TUNNELING AWARD 2015
LEAF AWARD 2015 AND 2013



MILAN SUBWAY LINE 5 | ITALY
EUROMONEY PROJECT FINANCE AWARDS 2007 –
EUROPEAN TRANSPORT (LIGHT RAIL) DEAL OF THE YEAR

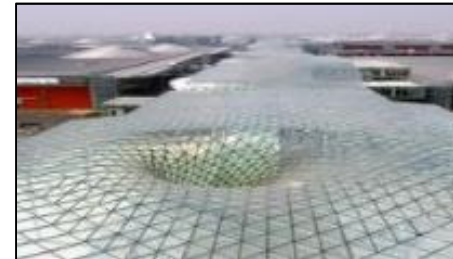
CIVIL & INDUSTRIAL BUILDINGS



ETLIK HOSPITAL, ANKARA | TURCHIA
2015 BONDS & LOANS AWARD - STRUCTURED
FINANCE DEAL OF THE YEAR



FOUR HOSPITALS IN TUSCANY | ITALY
PROJECT FINANCE DEALS OF THE YEAR 2012 -
EUROPEAN HEALTHCARE AWARD



EXPO FAIR CENTRE IN MILAN (RHO-PERO) | ITALY
2007 INTERNATIONAL ARCHITECTURE AWARD



NEW HOSPITAL IN VENICE-MESTRE | ITALY
2005 PFI AWARDS - EMEA PPP DEAL OF THE YEAR

RENEWABLES / WATER & ENERGY



CHACAYES HYDROELECTRIC POWER PLANT | CHILE
POWER GEN INTERNATIONALS PROJECT OF THE YEAR
2012 - BEST HYDRO PROJECT OF THE YEAR



CONCEPCION HYDRO PROJECT | HONDURAS
1991 INGERSOLL-RAND ITALIA



INGA 1&2 HYDROELECTRIC PROJECTS |
 DEMOCRATIC REPUBLIC OF THE CONGO
1975 INGERSOLL-RAND ITALIA



HEADQUARTERS

Astaldi S.p.A

Via Giulio Vincenzo Bona n. 65

00156 Rome – Italy

www.astaldi.com